

SLIMAIRE 230V & 12V TWIN SPEED FANS

EXCEPTIONALLY QUIET, HIGH PERFORMANCE EXTRACT FANS FOR WALL/WINDOW AND CEILING APPLICATIONS.



BENEFITS

MEETS REGULATIONS

Part F Building regulations compliant.

IPX4 SPLASHPROOF

Can safely be installed in Zones 1 and 2.

QUIET RUNNING

For occupant acceptability.

ENERGY EFFICIENT MODERN DESIGN

Low running costs.

BOOST FACILITY

For additional airflow via pull cord.

FLEXIBLE SOLUTIONS

Can be surfaced mounted, wall panel window or recessed. (Window kits available - WINKIT100X - WINKIT150X).

CONTINUOUS RUNNING

For guaranteed ventilation.

MAINTENANCE

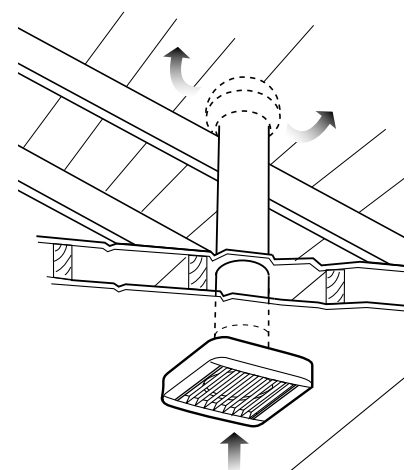
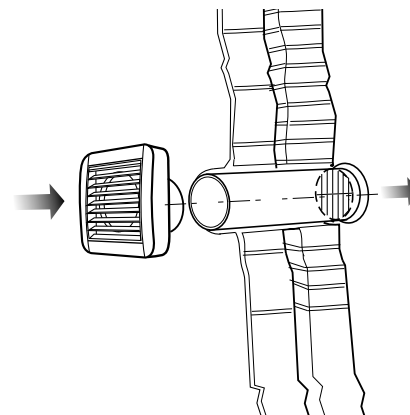
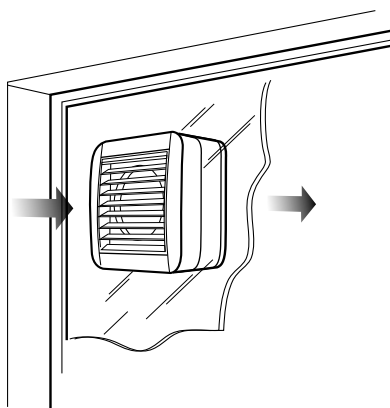
Clip of cover of access to clean.

1 YEAR WARRANTY

For peace of mind.

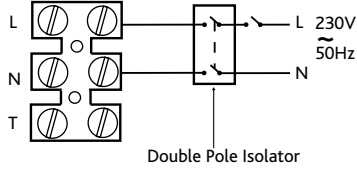
MOUNTING OPTIONS

The Nuair Slimaire range of SELV and 2 speed axial fans incorporates 3 models. They are ideal for ventilating small rooms such as toilets, bathrooms, cloakrooms and kitchens etc and can be installed on wall, ceiling, panel or window.

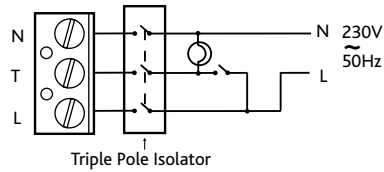


WIRING - SSLIMLINE 100X & 150X TWIN SPEED FANS

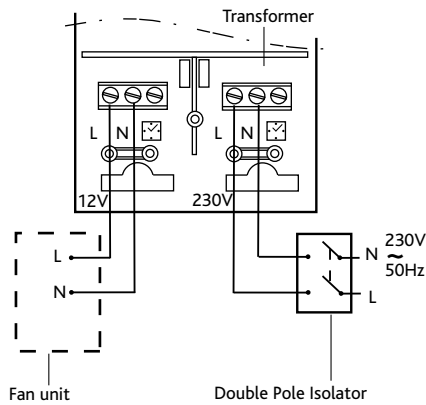
SLIMAIRE 100XPC/150XPC with integral cord.



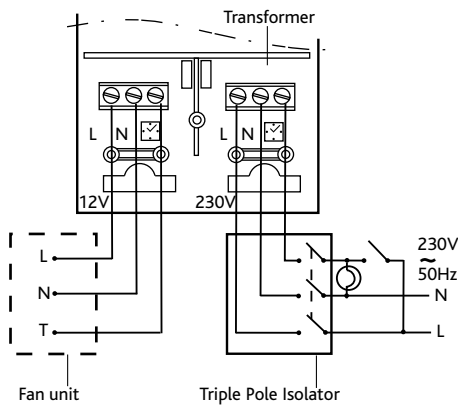
SLIMAIRE 100XPC/150XPC



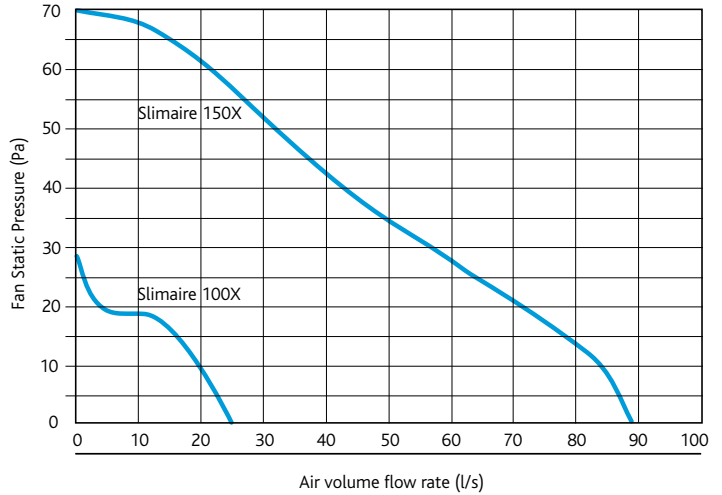
SLIMAIRE 100XPC-12, 12V with integral cord.



SLIMAIRE 100XPC-12, 12V with remote switch.
(Pull-cord switch must be OFF before removing cord).



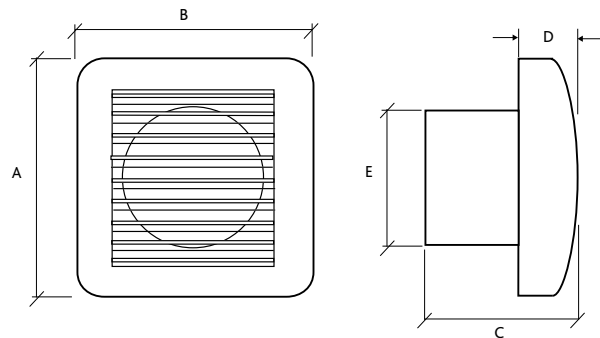
PERFORMANCE SLIMAIRE 100X & 150X AXIAL FANS



SLIMAIRE 100X & 150X- RANGE & CONTROL FUNCTION

Code	dB(A)@3m	Operating voltage	Control function
SLIMAIRE 100XPC	39	230	Continuous low duty with boost facility operated by pull cord or remote switch.
SLIMAIRE 100XPC-12	39	12	Continuous low duty with boost facility operated by pull cord or remote switch, 12V SELV. This version must be installed using the remote transformer supplied (see current IEE Regulations for guidance).
SLIMAIRE 150XPC	49	230	Continuous low duty with boost facility operated by pull cord or remote switch.

DIMENSIONS (MM) SLIMAIRE 100X & 150X



DIMENSIONS (mm) & WEIGHTS

Unit	A	B	C	D	E dia.	Weight (Kg)
SLIMAIRE 100	155	155	92	35	97	0.5
SLIMAIRE 150	209	209	137	52	149	1.2

CONSULTANTS SPECIFICATION

SLIMAIRE 100 & 150 SINGLE SPEED FANS

Supplied by Nuaire Ltd the fan is to be suitable for installation either into a ceiling, wall or panel (with the appropriate accessories).

There should be a neon on the front of the fan to indicate when it is operating.

The fan casing should be made of shockproof, high quality technopolymer, contain double insulated motors of shaded poly type mounted on self-lubricating, sealed ball bearings for long life, and be protected with a thermal cut-out.

The fan should be double insulated and be suitable for installation into Zones I and II.

The fan is to be CE marked and comply with current EC Low Voltage Directive EMC89/336 and with BSEN60529.

The fan should finally comply with Building Regulations requirements for installation into a utility room.

SLIMAIRE 100X & 150X TWIN SPEED FANS

Supplied by Nuaire, this fan can either be for installation in a wall, panel, ceiling or window (with optional kit).

The fan should have three speeds, allowing a choice of one of the two lower speeds for quiet, continuous operation at installation.

The user should be able to boost the fan to its maximum speed as necessary.

The fan should be made of shockproof high quality polymer and have a maintenance free, self lubricating sleeve bearing motor for long life and incorporates thermal cut-out.

The fan should be double insulated, splashproof and CE marked.

The fan should comply with Kitchen and Bathroom requirements of System 3, Part F1 of the Building Regulations. It should be capable of operation up to 9 l/sec, at 4 Pa, 2.6 watts at low speed 1, and at 12 l/sec, 14 Pa and 4.8 watts at low speed 2.

Finally the fan should comply with EN 60335-2-80, EC Low Voltage Directive LVD 2006/95/CE and EC Directive EMC2004/108 and be CE marked.